



vebro project showcase

Co-op Academy, Leeds, England

the challenge

A durable, attractive floor coating system with exceptional chemical and slip resistance was required for the science laboratory at Co-op Academy, Leeds.

meet the client

Co-op Academy in Leeds, situated in the eastern corner of Leeds city centre, is one of a network of around 30 schools across the North of England sponsored by the Co-op Academies Trust.

In line with the values of Co-op, the school aims to provide a welcoming environment both through its inclusive, diverse culture and its impressive facilities.

the project

The summer shut down has provided an opportunity for refurbishment works in the school's science laboratories, allowing for the installation of a new slip and chemical resistant floor finish that would withstand the daily footfall experienced within a classroom environment.

The well-appointed laboratories each feature fixed cabinets for gas nozzles and plug sockets, as well as free-standing lab benches and metal legged stools for students.

key service criteria



Slip resistant, safe finish



Robust & durable



Chemical resistant finish



Easily cleaned & maintained



Wear & impact resistant

vebro's solution

vebrores EP Quartz Classic was chosen for the science laboratories at Co-op Academy, Leeds, in the attractive deep grey shade *Starry Night*.

The durable, hand-trowelled epoxy quartz flooring system, delivers a hard wearing surface underfoot that will protect against potential damage caused by regular footfall, as well as the movement of heavy desks and classroom seating.

meet the installer

MJF Group is an established support services company providing specialist solutions to businesses nationwide.

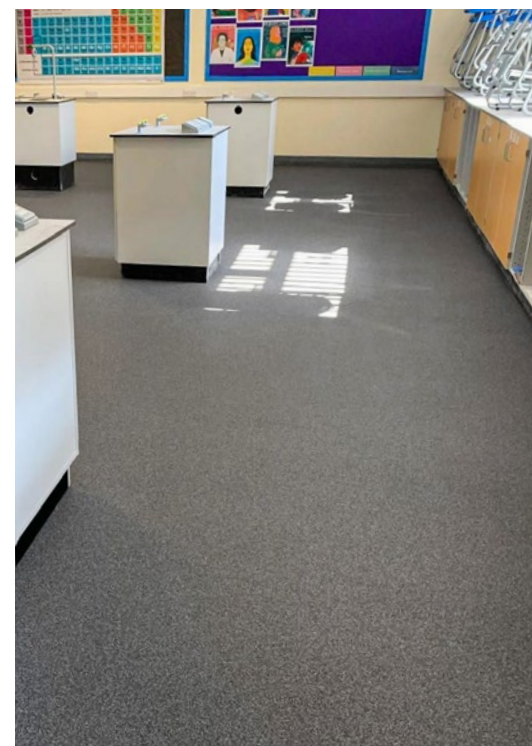
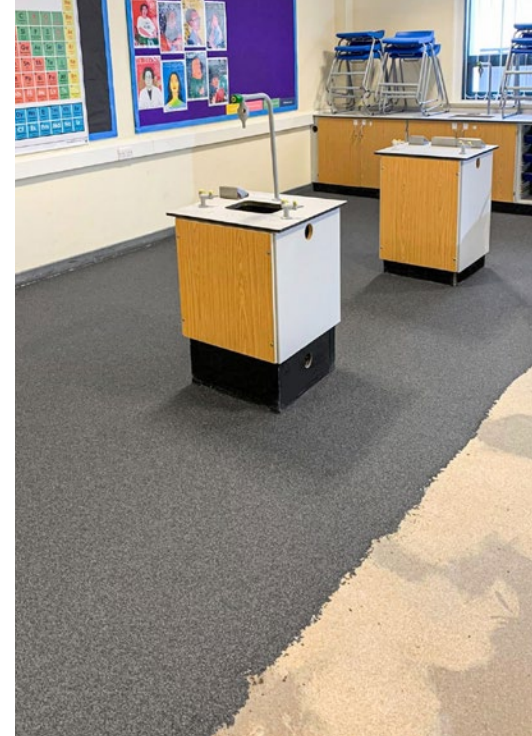
Since 2006 the company has built an enviable reputation in the commercial cleaning market, fuelling a later expansion into site services and specialist flooring alongside growth from local to national level.

Not only that, the chemical resistant nature of **vebrores** EP Quartz Classic makes it ideal for an environment that is likely to experience chemical spillage, as well as routine exposure to detergents as part of the school's cleaning regime.

Installed by the team at MJF Group during the summer holiday, the floor needed to be installed around the fixed units that house the laboratories' gas nozzles and power stations.

MJF's dedicated team of flooring experts are a group of highly skilled professionals who deliver a first-class service, ensuring all of their flooring solutions achieve outstanding results within an efficient and timely manner.

MJF pride themselves on offering their clients extremely competitive prices, without ever compromising results.



contact the **vebro** team