




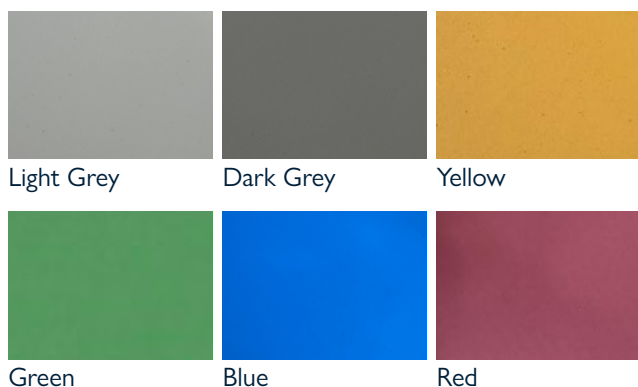


# vebrocrete SR (pf)

A slip resistant, multi-layer polyurethane concrete flooring system offering excellent chemical and wear resistance in semi-wet or wet process areas.

## why choose vebrocrete SR (pf)?

-  High temperature resistance up to 90°C
-  Excellent resistance to corrosive foodstuffs & aggressive cleaning solvents
-  Excellent cleanability & seamless hygienic finish
-  Choose **vebrocrete** PU Satin Coating for additional sheen on the surface
-  Free from phthalates and other LBC Red List 'worst-in-class' materials

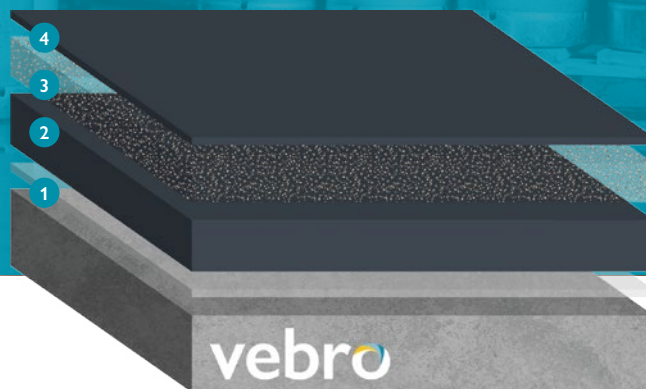


## contact the vebro team

w: [vebropolymers.com](http://vebropolymers.com) | e: [asia@vebropolymers.com](mailto:asia@vebropolymers.com) | t: +60 3 5871 2968\* / 2969† | f: +60 3 5871 2970

Please note, the applied colours may differ from the examples shown. **vebrocrete** systems may exhibit a yellowing effect over time resulting from thermal, UV or chemical exposure. This will be more pronounced on light grey or blue shades. \*Colours marked with an asterisk will incur an additional supplement. The typical physical properties given above are derived from testing in a controlled laboratory environment at 20°C. Results derived from testing field applied samples may vary dependent upon site conditions. The slip resistance figures given above are affected by application techniques and prevailing site conditions. Slip resistance can reduce over time due to poor maintenance, general wear or surface contaminants. Good housekeeping practices should be observed.

\*Customer Services †General Enquiries



## system design & typical properties

1	<b>Primer</b>	<b>vebrocrete</b> PU Primer (pf)	0.50 kg/m <sup>2</sup> (porous substrates)
2	<b>Body Coat</b>	<b>vebrocrete</b> PU MF (pf)	5.70 kg/m <sup>2</sup>
3	<b>Scatter</b>	<b>vebro</b> 30 – 60 Sand	3.50 kg/m <sup>2</sup>
4	<b>Topping</b>	<b>vebrocrete</b> PU Matt or Satin Coating (pf)	0.60 kg/m <sup>2</sup>

<b>Thickness</b>	4.0 mm
<b>FeRFA Type</b> BS 8204-6	Type 8
<b>Temperature Resistance</b>	-15 – 90°C at 4.0 mm
<b>Fire Resistance</b> EN 1350-1	B <sub>s</sub> S1
<b>Reaction to Fire for Floor Coverings</b> AS ISO 9239,1-2003	CHF (Non Directional): 10.7 kW/m <sup>2</sup> Smoke (Non Directional): 55% min
<b>Co-efficient of Thermal Expansion</b> ASTM C531	5.8 × 10 <sup>-5</sup> / °C
<b>Slip Resistance</b> AS 4586-2013 (Wet Pendulum Test)	P5 / PTV ~73 (based on 900 micron broadcast aggregate)
<b>Slip Resistance</b> TRLL Pendulum Slip Test / DIN 51130	Dry >40, Wet >40 (actual value depends on specification) / R9
<b>Abrasion Resistance</b> EN 13892-4 / BS 8204-2	AR 0.5 / Special Class
<b>Shore D Hardness</b>	80 after 28 days
<b>Compressive Strength</b> EN 196-1 / ASTM C109	50 N/mm <sup>2</sup>
<b>Speed of Cure (at 20°C)</b>	Light Foot Traffic – 12 hours Full Chemical Cure – 7 days

For a full technical profile, please refer to the data sheet for each product in the system design.

