



vebro project showcase

Edinburgh Waverley Station, Scotland, UK

the challenge

A fast-cure flooring system that would minimise disruption to daily operations for upgrade works to a floor mezzanine and stairwell at the iconic Edinburgh Waverley railway station.

meet the client

Edinburgh Waverley railway station is an architectural icon located in the centre of Edinburgh and the second busiest station in Scotland, after Glasgow Central.

The station has many Victorian architectural elements – including the booking hall – but has also been recently renovated with a new roof that provides great natural light to the terminal below.

the project

Network Rail has invested £1.8 million towards refurbishing the station's toilets, improving the floor surface on the mezzanine walkways and stairwell in the station as well as reopening a public access corridor through the main building. The toilet facilities will be replaced with energy efficient systems and fittings.

Work has also begun on a new public corridor which will connect the east concourse with the ticket hall – restoring a walking route which was part of the original station design.

key service criteria



Fast cure system designed to minimise disruption



Slip resistant to prevent slip, trip and skid accidents



Seamless, hygienic & easy to clean



Decorative finish for public spaces



Excellent compressive strength

vebro's solution

Improvements to the flooring on the concourse mezzanine level have already been completed by commercial and industrial flooring specialists, IFP Scotland, using a fast-cure, slip-resistant and decorative MMA resin system designed to minimise any disruption to the station's operations throughout the refurbishment.

vebrospeed Quartz SR is a decorative, fast curing MMA flooring system used in areas subject to frequent pedestrian traffic, as well as surfaces that can become slippery from inclement weather and dirt tracked in on wet shoes and boots.

The system is positively textured to promote safety underfoot, minimising the risk of slip, skid and trip accidents.

meet the installer

IFP (short for Industrial Floor Preparation) Scotland, based in Livingston, West Lothian, has over 50 years of experience in the art of surface preparation including diamond grinding and shotblasting substrates prior to the installation of floor coverings.

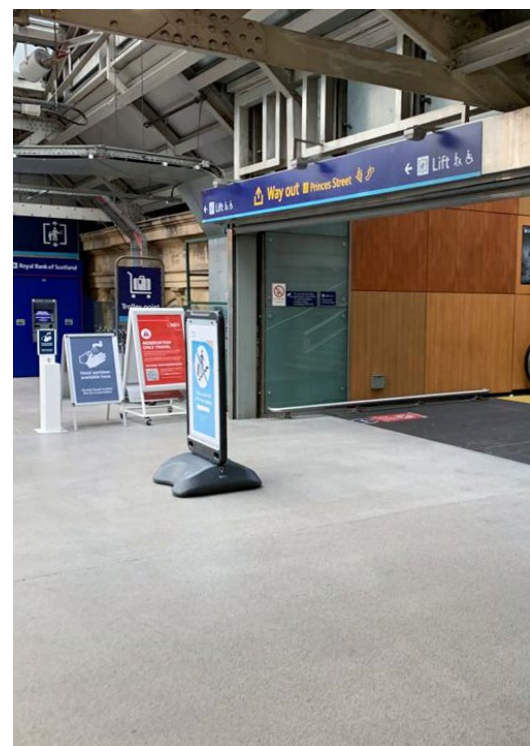
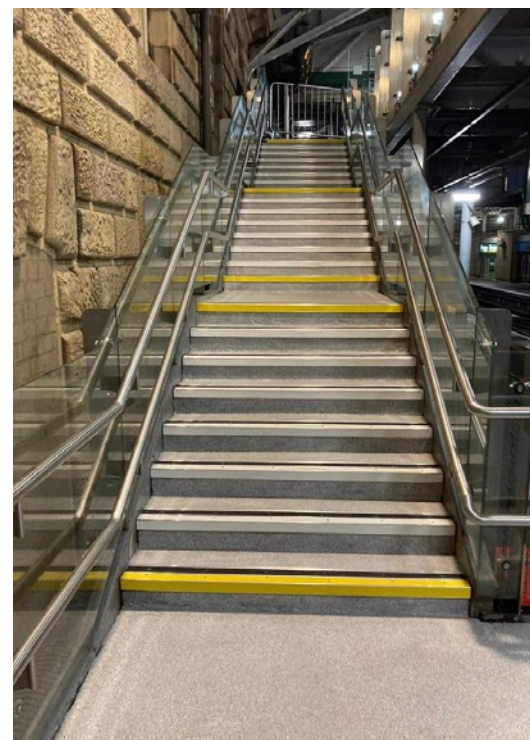
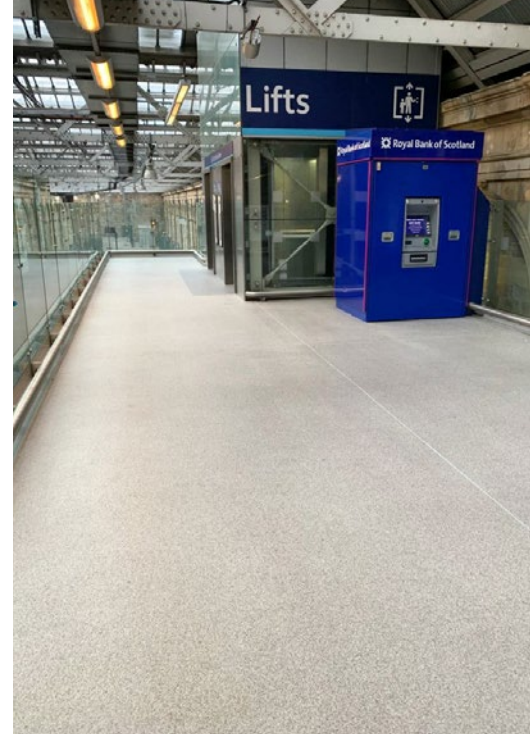
The material was installed in two decorative quartz blends, Pebble Beach and Rainstorm.

IFP installed the material over the existing tiled finish using a specialist primer to ensure adhesion to the substrate before installing the MMA quartz system.

vebrospeed Flake, a fast-cure resin system that sees coloured flakes broadcast into the MMA resin binder before being sealed for a smooth finish was chosen for the stairwell refurbishment in our White Russian flake blend.

MMA resins are an excellent choice for floor refurbishment works owing to their rapid installation and fast-cure properties – full foot and vehicular traffic is accepted by the system within just 60 minutes of installation.

The team has also carried out a number of high-profile seamless resin floor installation projects including the Printworks, Glasgow and Queensferry Crossing.



get in touch

vebropolymers.com/contact