



vebro project showcase

VINCI Construction, Widnes, UK

the challenge

A global construction, energy and infrastructure organisation required a durable, chemical resistant floor coating solution with an anti-slip profile that would withstand the daily wear and tear of its internal vehicle repair and maintenance facility.

meet the client

VINCI Construction is part of VINCI Group, a multinational enterprise with operations in the energy, infrastructure and construction industries.

Founded in 1899, the company now has a presence in over 120 countries with a global team of around 220,000 people.

The Widnes facility is one of ten VINCI Construction UK locations and houses, among other facilities, a vehicle maintenance workshop where the company ensures their fleet of general and specialist vehicles.

the project

The industrial unit that houses the workshop previously had a concrete paving slab floor that proved to be uneven, unsafe, and difficult to maintain.

Not only did the new flooring solution need to address these concerns, it also needed to be both slip and chemical resistant as well as feature clearly marked automotive bays and provide enough durability to withstand frequent wheeled traffic as well as the impact of dropped tools and the weight of heavy equipment.

key service criteria



Durable, hard-wearing finish



Chemical resistant



Slip resistant finish



Resistant to wheeled traffic



Colour zoning & instructional signage

vebro's solution

Installed in a combination of RAL 7037 Dusty Grey and RAL 6024 Traffic Green, **vebrores** EP HBC was installed across the 332 m² vehicle workshop, with the Traffic Green used to mark out the facility's six automotive bays, before being outlined using **vebrodeck** PU Linemarker in Yellow.

Prior to the installation of **vebrores** EP HBC SR – a system comprising an initial layer of **vebro** EP Primer followed two coats of **vebro** EP Universal with a broadcast of 52 mesh silica sand after the first coat for an anti-slip profile – the pre-existing concrete paving slabs were first

coated with an epoxy DPM and a 20.0 mm screed to level the surface.

vebrores EP HBC SR is a pigmented, solvent-free, slip-resistant high build epoxy floor coating system that is best suited to floors in medium duty processing areas where a textured, hard-wearing, chemical resistant finish is required.

Available in a wide range of BS 4008 or RAL matched shades, the system is ideally suited to areas where there is a need for navigational demarcation and zoning.

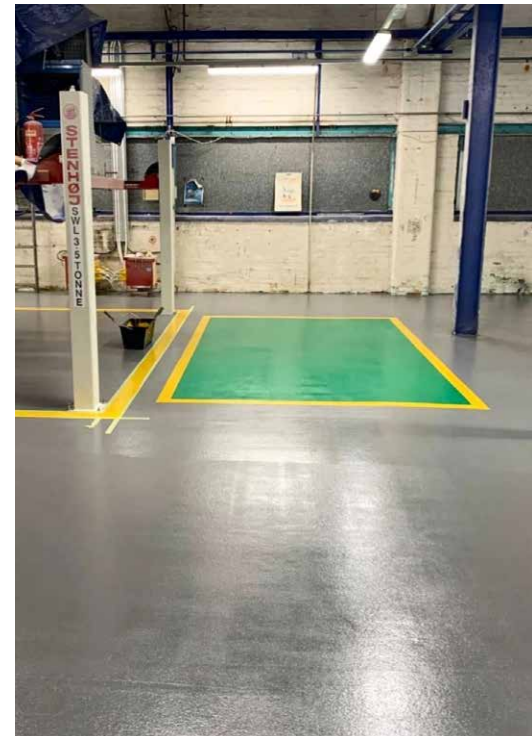
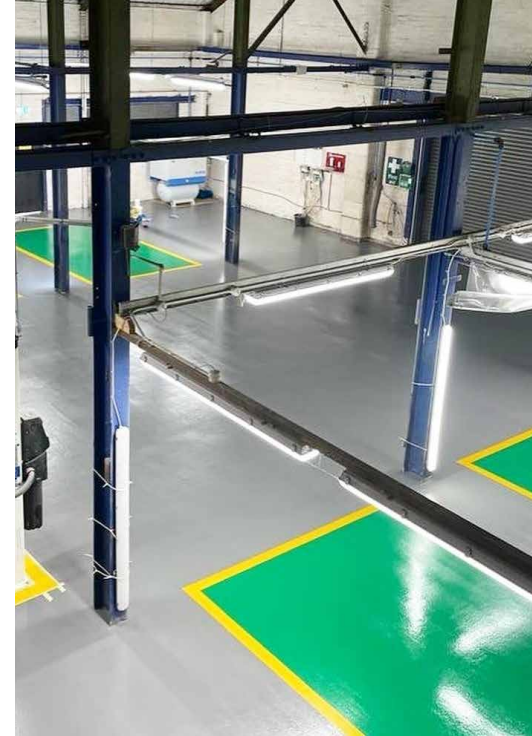
meet the installer

MJF Group is an established support services company providing specialist solutions to businesses nationwide.

Since 2006 the company has built an enviable reputation in the commercial cleaning market, fuelling a later expansion into site services and specialist flooring alongside growth from local to national level.

MJFs dedicated team of flooring experts are a group of highly skilled professionals who deliver a first-class service, ensuring all of their flooring solutions achieve outstanding results within an efficient and timely manner.

MJF pride themselves on offering their clients extremely competitive prices, without ever compromising results.



contact the **vebro** team