

warehouse dilapidations flooring guide

a big **hello** from vebro


Vebro Polymers is a global supplier of polymer flooring solutions, specialist coatings, pump screeds, rapid-drying screed additives and car park deck wearing and waterproofing solutions.

Our products and systems have been expertly designed for use in a wide variety of applications.

We can also provide specialist materials for use on fast turnaround new-build or renovation projects as well as those required for external applications or subfloor preparation prior to the installation of final finishes.

industries we serve



 industrial & manufacturing



 food & beverage



 parking garages



 commercial venues



 prison buildings



 shopping centres



 institutional buildings




 mixed-use developments



 transport & infrastructure



 external areas

our **big** promise

Vebro Polymers has been formed by like-minded individuals who have hundreds of years' combined experience in the polymer flooring, coatings and construction chemicals industry.

The company was founded on a simple service promise to customers, which aims to provide the best quality, agility and reliability in the industry.



Quality



Agility



Reliability

global team, local expertise

Founded in the UK, Vebro Polymers has grown, establishing hub HQs and partnerships to serve local markets across the world.



polymer flooring explained

what is polymer flooring?

Polymerisation is, in short, a chemical reaction between multiple components to create a polymer.

Although the components of a polymer floor are primarily liquid (other than added decorative flakes, filler aggregates, texturising sand or anti-slip quartz beads), the chemical reaction results in a hard, durable surface.

There are different types of polymer flooring, each with its own unique performance characteristics.

Technology	Best for...
Epoxy	Applications where durability and chemical resistance are required
Polyurethane	Applications where elasticity, impact resistance and UV stability are required
Polyurethane Concrete	Heavy-duty applications and areas of thermal shock
Comfort PU Liquid Vinyl	Commercial applications where design and improved indoor environmental quality are of high importance
Methyl Methacrylate (MMA)	Speedy applications, where a quick turnaround is required

how is polymer flooring installed?

The first, and arguably most important, step in the installation of a resin floor system is preparation. The applicator will ensure that the substrate is smooth, level and free of contaminants like dust, oils or grease that may affect the integrity of the final finish.

Once the substrate is ready, resin flooring materials are installed by experienced applicators in layers. Depending on the type of floor system being installed, this process often starts with a primer layer, then body coats and sealers where necessary, ensuring each coat has cured to the appropriate degree before moving on to the next.

benefits of seamless resin floor finishes



Abrasion & impact resistant finishes to improve floor life cycle



Fast-cure options available for fast-turnaround construction schedules



Customisable slip resistance profile to aid in workplace safety



Linemarking & demarcation available to aid in navigation



Durable, heavy duty finishes that accommodate forklift traffic



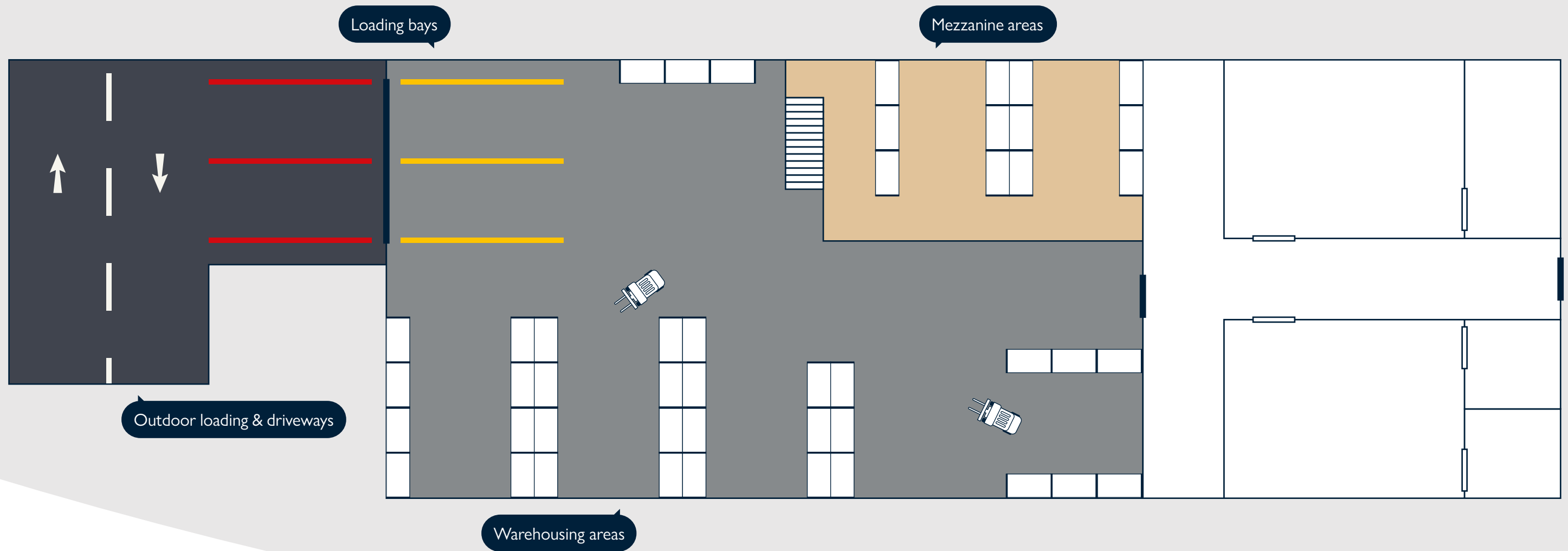
Various formulations & performance criteria options for all budgets



Chemical resistant finishes that help to elongate the life cycle of the floor finish



Easy to clean, seamless & impervious finishes



dilapidations floor systems solutions

Each of Vebro Polymers' range of floor systems has been specifically designed to meet various service criteria.

For that reason, we've put together our recommended floor systems for each area of industrial warehouse dilapidations.

level with us...

If your substrate needs some attention, **vebro**screed systems are also available should any levelling be required prior to the installation of polymer finishes! Visit vebropolymers.com for more information.

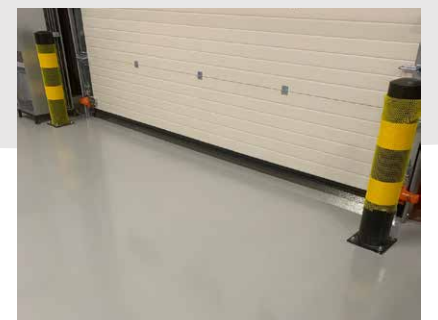
vebropolymers.com



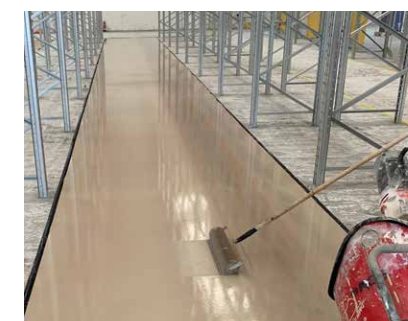
Repair mortars & jointing compounds



High build epoxy & polyurethane coating systems



Self-levelling epoxy & polyurethane coating systems



Cementitious levelling & wearing screeds



Safety line marking & cross-hatching

warehouse floor systems guide

Ranging from epoxy and polyurethane coating systems for warehouses and corridors, through to methyl-methacrylate deck systems and demarcation for loading bays, Vebro Polymers offers a complete range of resin flooring materials for warehouse diapidations.

Vebro Polymers' range of epoxy, polyurethane and MMA flooring and deck coating systems are available in a wide range of standard, non-standard and premium colours. For your copy of the Vebro Polymers Colour Bible, visit vebropolymers.com.



what does it all mean?

Throughout this floor system guide, you will see a number of icons relating to the installation and performance features of each system recommended for industrial facilities and warehouse units. Here's what they all mean...


Application thickness


FeRFA type


Working time


Time before light foot traffic


Full chemical curing time at 20°C

technically speaking...

Looking for technical information? Full technical profiles can be found in Vebro Polymers' technical datasheets.

For the most recent technical datasheets and standard system specifications, please visit vebropolymers.com

epoxy & polyurethane floor coating systems

vebrores EP SC

- 1 vebro EP Sealer (Semi Gloss) (2 coats)

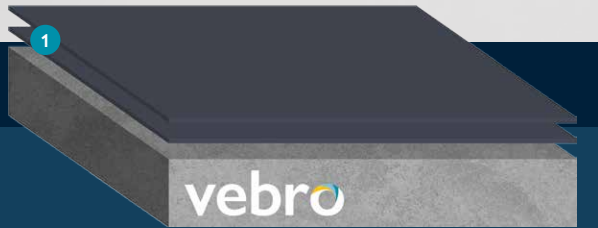
best for warehousing areas

0.12 mm

1

~40 mins

6 hrs



vebrores EP HBC

- 1 vebro EP Primer
- 2 vebro EP Universal (2 coats)

best for warehousing areas

0.35 mm

1

~20 mins

16 hrs

7 days



vebrores EP HBC SR

- 1 vebro EP Primer
- 2 vebro EP Universal
- 3 vebro 52 / 30 Silica Sand
- 4 vebro EP Universal

best for warehousing areas

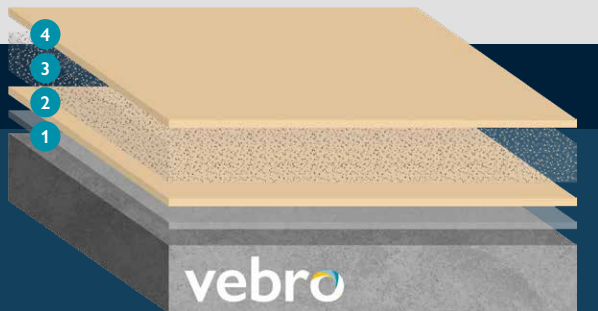
1.0 mm

3

~20 mins

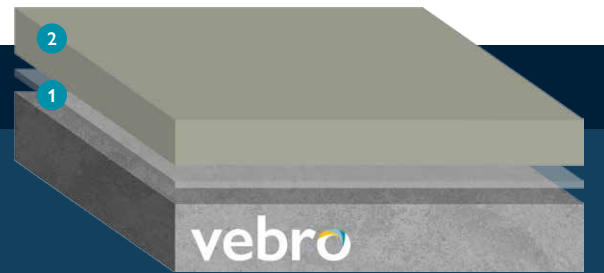
16 hrs

7 days



vebrores EP SL

- 1 vebro EP Primer (2 coats)
- 2 vebro EP SL



best for warehousing areas

2.0 – 4.0 mm

5

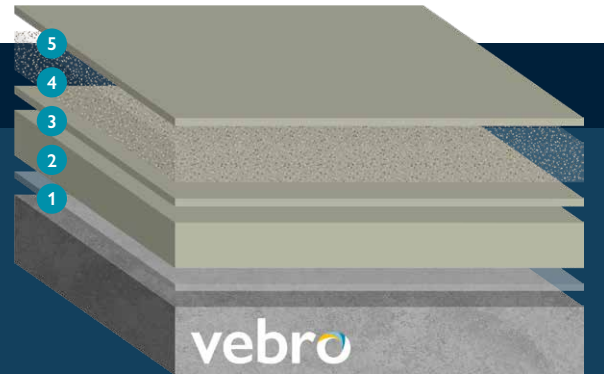
~60 mins

16 hrs

7 days

vebrores EP SL SR

- 1 vebro EP Primer (2 coats)
- 2 vebro EP SL
- 3 vebro EP Universal
- 4 vebro 52 / 30 Silica Sand
- 5 vebro EP Universal



best for loading bays

3.0 – 5.0 mm

5

~60 mins

16 hrs

7 days

vebrores PU HBC

- 1 vebro EP Primer
- 2 vebro PU HBC (2 coats)



best for warehousing areas & mezzanines

0.7 mm

3

20–25 mins

16 hrs

7 days

vebrores PU SL HD

- 1 vebro EP Primer
- 2 vebro PU SL HD



best for warehousing areas, mezzanines & loading bays

2.0 – 4.0 mm

5

20–25 mins

16 hrs

7 days

sub-floor & wearing screeds

vebroscreed Industrial

vebroscreed Industrial is a deep-fill, rapid-setting, high strength cementitious smoothing underlayment.

- ✓ 30 – 40 minutes working time
- ✓ Foot traffic in 2 – 3 hours
- ✓ Pump or trowel applied
- ✓ Suitable to receive a resin floor coating system
- ✓ Suitable for underfloor heating systems
- ✓ Protein-free and moisture tolerant



best for levelling prior to floor finishes

5.0 – 50.0 mm

30 – 40 mins

2 – 3 hrs

36+ hrs

vebroscreed X

vebroscreed X is a pour or pump-applied cementitious smoothing screed for repairing or levelling external concrete surfaces.

- ✓ Can be used as a finished wearing surface
- ✓ Pump or pour applied
- ✓ More economical than resin-based systems
- ✓ Protein-free and moisture tolerant – suitable for use on wet areas



best for wearing surfaces

5.0 – 30.0 mm

20 – 30 mins

2 – 3 hrs

12+ hrs

but wait, there's more...

Vebro Polymers is also able to offer repair mortars, jointing compounds and safety linemarking products. For more information, visit vebropolymers.com



vebro polymers.com

Please note: the information in this guide is subject to change and the most recent technical data should be sought for accurate, up-to-date product or system information. Errors & omissions excepted. The applied colours may differ from the examples shown within this guide. Actual samples should always be viewed before making a final decision, especially if colour accuracy or matching is key to your decision.

© 2024, Vebro Group. All rights reserved.

Dilapidations Flooring Guide [Vebro Polymers] 23/08/24